



CREO DESIGN PACKAGES



You deserve more in your 3D CAD packages and Creo delivers. Welcome to the new industry standard, with more capabilities in every seat, out of the box. With Creo Design Packages, you'll be able to stay ahead of the competition by building more innovative products faster and at less cost. Design the products of the future, today with Creo Design Packages.

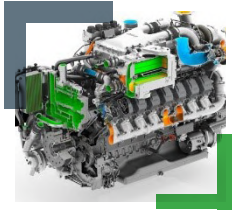
CREO DESIGN PACKAGES

	Design Essentials	Design Advanced	Design Advanced Professional	Design Engineering	Design Engineering Professional
Industry Standard 3D CAD Capabilities	✓	✓	✓	✓	✓
Augmented Reality Design Visualization	✓	✓	✓	✓	✓
Top Down Design & Concurrent Engineering		✓	✓	✓	✓
Prismatic & Multi-surface Milling		✓	✓	✓	✓
Engineering Notebook		✓	✓	✓	✓
Advanced Surfacing & Additive Manufacturing			✓	✓	✓
GD&T & Tolerance Analysis			✓	✓	✓
Mold Design & High-speed Milling			✓	✓	✓
Advanced Multi-CAD Collaboration				✓	✓
Simulation & Fatigue Advisor				✓	✓
Production Machining				✓	✓
Interface for JT				✓	✓
IoT-driven Product Insight				✓	✓
Advanced Simulation					✓
Options Modeler Topology Optimization					✓
Metal Printing & Complete Machining					✓
Clearance and Creepage Analysis					✓

Creo+

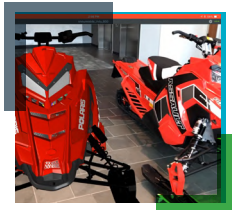
PTC Control Center	✓	✓	✓
Real-time Collaboration with Creo+	✓	✓	✓





Industry Standard 3D CAD Capabilities

- For more than 30 years, thousands of companies have relied on Creo's robust set of 3D CAD capabilities.
- 3D Part & Assembly Design
- Automatic 2D Drawing Creation
- Parametric & Freestyle Surfacing
- Assembly Management & Performance
- Sheet Metal Design
- Mechanism Design
- Plastic Part Design
- Direct Modeling (Flexible Modeling)
- Additive Manufacturing
- Augmented Reality
- Model-Based Definition
- Multi-Body Design



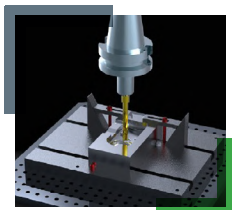
Augmented Reality Design Visualization

- In every seat. With a few clicks, you can author and publish an AR experience from inside your Creo model.



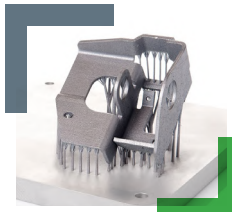
Top-down Design & Concurrent Engineering

- Plan out the assembly's skeleton so your team can work in parallel. When primary design intent changes, the assemblies adapt.



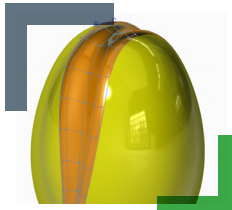
Prismatic & Multi-surface Milling

- Go smoothly from product design to manufacturing with this specialist for prismatic production machining.



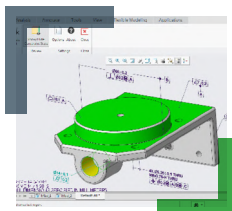
Additive Manufacturing

- Go from concept to print check all in Creo and give your design production-ready surfaces.



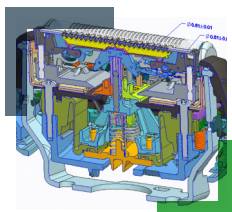
Advanced Surfacing

- Combine the power of parametric modeling and flexibility of freeform surfacing.



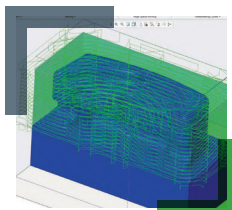
Geometric Dimensioning & Tolerancing

- Expert guidance on the application of GD&T and validation that you've applied GD&T correctly.



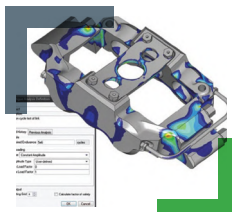
Tolerance Analysis

- Analyze and document geometric tolerances directly on 3D CAD models.



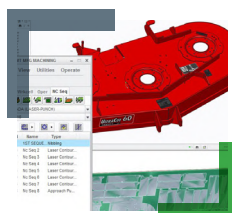
Mold Design & High-speed Milling

- Improve the efficiency and productivity of your mold design and tooling, and benefit from high-speed machining tool paths.



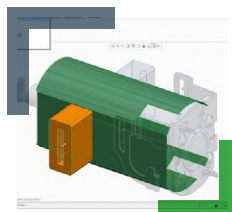
Simulation & Fatigue Advisor

- Designed specifically for the engineer, these tools allow you to make simulation part of your own design process.



Production Machining

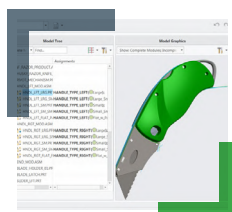
- Robust NC programming capabilities spanning the functions of milling, turning, and wire EDM.



Extended Collaboration

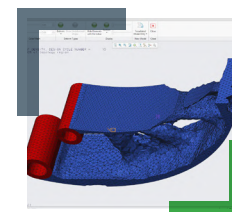
Seamlessly integrate and work with data from SOLIDWORKS and Autodesk Inventor, CATIA V4/V5, Siemens NX:

- Open, Update and Save As native SOLIDWORKS, CATIA V4/V5, Siemens NX files
- Automatically detect and update Inventor, SOLIDWORKS and Autodesk Inventor, CATIA V4/V5, Siemens NX data
- Open and update native Autodesk Inventor files



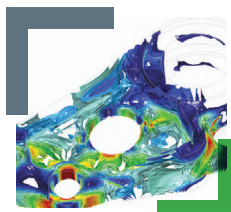
Options Modeler

- Create and validate 3D modular products.



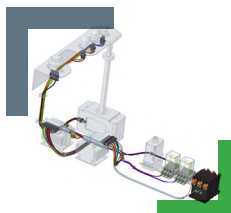
Generative Topology Optimization

- Create optimized parametric geometry by defining objectives and constraints and then driving your model toward specified requirements.



Advanced Simulation

- Simulation and analysis at your fingertips. Find and fix issues with liquid or gas flow around your products – before you invest in prototypes.



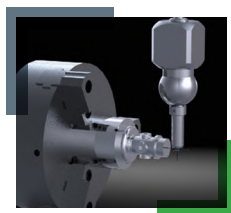
Routed Systems Design

- Automate your piping, cabling, and clearance and creepage analysis.



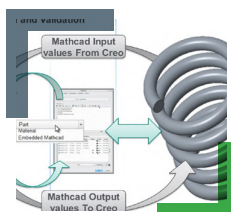
Metal Printing

- Creo has you covered for the major metal printers on the market today.



Complete Machining

- Creo Production Machining gives you multi-axis machining, plus full NC programming and extensive tool libraries.



Engineering Notebook, powered by PTC Mathcad

- Drive design dimensions in Creo from transparent engineering calculations to automatically update Creo geometry
- Perform analysis on Creo parameters to validate the design meets mathematical specifications
- Leverage the integrated documentation environment to capture Engineering IP as part of the Creo design data

BENEFITS OF ON-PREMISES SUBSCRIPTION

(Included in every Creo Design Package):

ACCESS TO LEARNING CONNECTOR:

Learning Connector gives you access to a comprehensive set of tutorials and playlists, for in-context, bite-size training. Tutorials and playlists are self-paced and available on-demand.

EXTENDED LICENSE BORROWING:

Working remotely just got easier. Borrow floating licenses for up to 180 days - 150 days more than perpetual.

HOME USE LICENSE:

Leave the laptop at work. Every package now includes a home use license of the Creo Design package.

PERFORMANCE ADVISOR:

The Creo Performance Advisor provides a dashboard for your entire Creo installation, allowing you to understand and optimize the performance of your entire Creo environment.

CAD BENEFITS OF SAAS - EXPANDING THE BENEFITS OF DIGITAL TRANSFORMATION

ACCELERATE INNOVATION WITH REAL-TIME COLLABORATION:

Multiple contributors can work concurrently in real-time for improved communication and enhanced innovation throughout the product design lifecycle.

EFFICIENT LICENSE MANAGEMENT:

Reduce time and effort of managing and deploying licenses, using cloud-based desktop tools. Deliver required entitlements to groups and users efficiently and at scale.

BETTER USER EXPERIENCE:

Automatic updates ensure all users have access to the latest improvements.

DATA SECURITY:

Intellectual property is protected through better access control. Avoid sending files through email and unsecured servers.

>>> THE CREO ADVANTAGE

Creo is the 3D CAD solution that helps you accelerate product innovation to build better products faster. Easy-to-learn Creo uses a model-based approach to seamlessly take you from the earliest phases of product design to manufacturing and beyond. Combining powerful, proven functionality with new technologies including generative design, real-time simulation, advanced manufacturing, IIoT and augmented reality, Creo helps you iterate faster, reduce costs and improve product quality. Creo is also available as a SaaS product, providing innovative cloud-based tools for real-time collaboration and streamlined license management and deployment. The world of product development moves quickly, and only Creo delivers the transformative tools you need to build competitive advantage and gain market share.

Please visit the [PTC support page](#) for the most up-to-date platform support and system requirements.

© 2024, PTC Inc. (PTC). All rights reserved. Information described herein is furnished for informational use only, is subject to change without notice, and should not be taken as a guarantee, commitment, or offer by PTC. PTC, the PTC logo, and all PTC product names and logos are trademarks or registered trademarks of PTC and/or its subsidiaries in the United States and other countries. All other product or company names are property of their respective owners. The timing of any product release, including any features or functionality, is subject to change at PTC's discretion.

420472_Creo_Packages_Overview_0324